

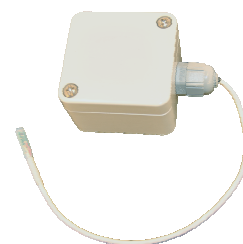
Waterproof Active RFID TAG

ITEMS TD

Ref. **IDF0943**

Wireless Temperature Sensor

- 🕒 **User-definable Tag's Identifier (RW)**
- 🕒 **External Temperature Sensor**
- 🕒 **IP65 Waterproof**
- 🕒 **High Receiving Range : 40 to 80 meters (open field)**
- 🕒 **Autonomy : 1 to 10 years (according to settings)**



Technical Specifications	
Battery Power Supply	3,6 VDC -1/2AA ER14250 Lithium Model
Frequency	433.92 MHz +/- 75Khz
Resolution	0.0625 °C
Accuracy out of calibration	+/- 0,5 °C typical ; +/- 0,5 °C max over the range -25 °C to +85 °C
	+/- 1 °C typical ; +/- 3 °C max over the range -40 °C to +125 °C
Sensor Operating Temperature	-40 °C to +125 °C
Housing Operating Temperature	-50 °C to +80 °C
Duty Cycle	From 1.3s to 12 hours by programming
ID code & Temperature Data Format	Transmitted code = XXXYYY xxx : Identifier code from 800 to FFF(hexa) yyy : Temperature code (hexa) 7D0= 125 °C 000= 0 °C 1E70= -25 °C
Settings & Configuration	By SCIEL PROG IR tool and ERW configuration software
Reader's Compatibility	SCIEL Reader Family
Battery Level Management	ID code for Low level of Battery (configurable) in alternated emission with the Tag's ID code. Ex : XXX 7FF where xxx stands for the Tag's ID code and 7FF the ID code for the low level of battery
Housing	ABS - 50x50x35 mm - IP65 - 2 internal mounting holes - external 20cm temperature sensor (other sizes on demand) - Dark standard cover
Standards	EN 301 489 - 3 : 2002 V1.4.1 ; EN 300 220 - 2007 : V2.1.2 ; CE Mark ; RoHS Certified