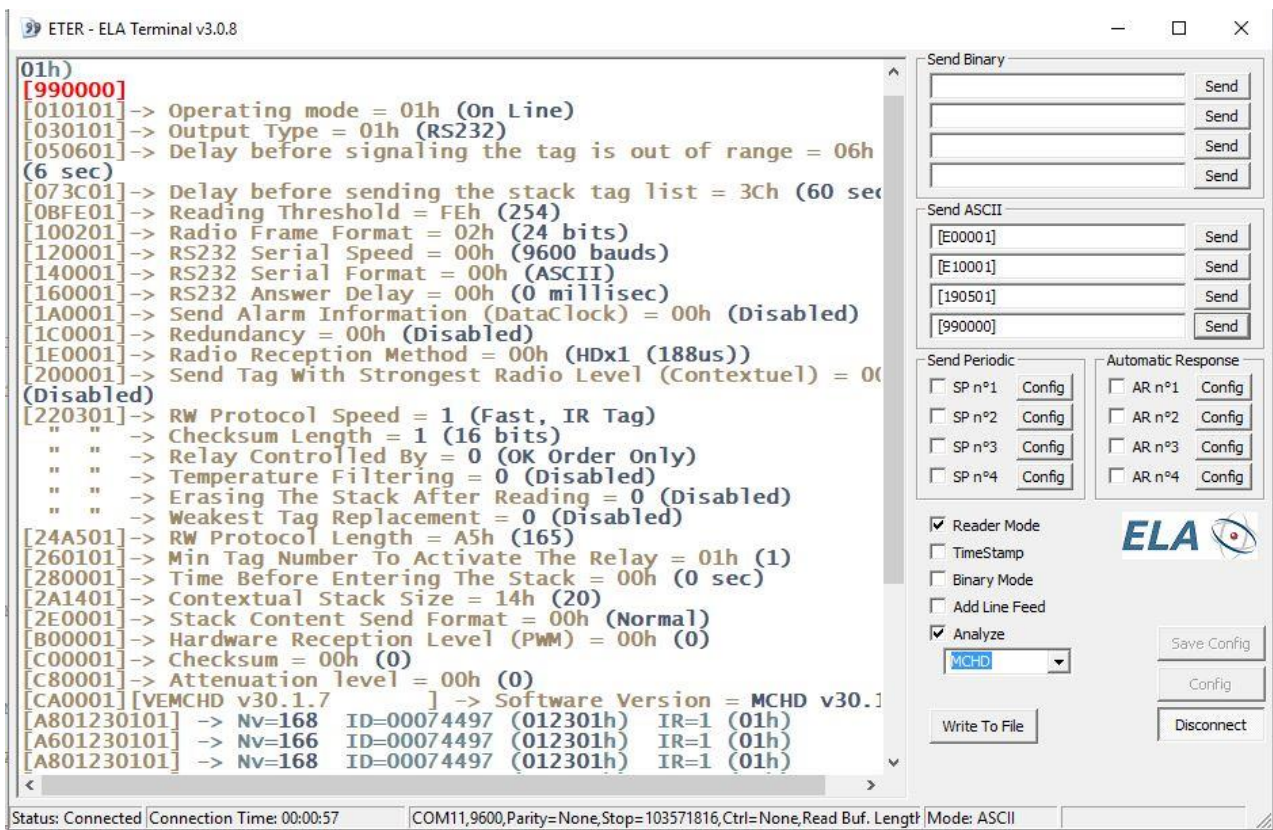


Quick start

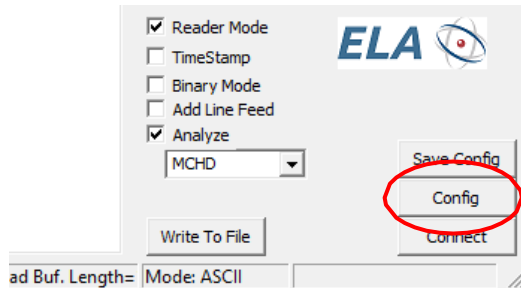
ETER SOFTWARE ELA TERMINAL READER



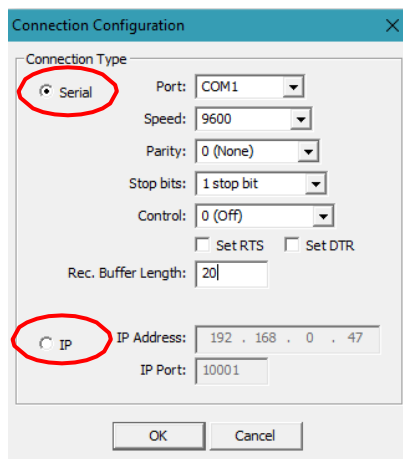
The screenshot displays the ETER - ELA Terminal v3.0.8 application window. The main area shows a list of configuration parameters and their values, such as Operating mode = 01h (On Line), Output Type = 01h (RS232), and various protocol settings. The right-hand side features a control panel with sections for Send Binary, Send ASCII, Send Periodic, and Automatic Response, each with input fields and Send buttons. At the bottom, there are checkboxes for Reader Mode, TimeStamp, Binary Mode, Add Line Feed, and Analyze, along with a dropdown menu set to MCHD and buttons for Save Config, Config, Write To File, and Disconnect. The status bar at the bottom indicates 'Status: Connected', 'Connection Time: 00:00:57', and 'COM11,9600,Parity=None,Stop=103571816,Ctrl=None,Read Buf. Length Mode: ASCII'.

1 COMMUNICATION PORT CONFIGURATION

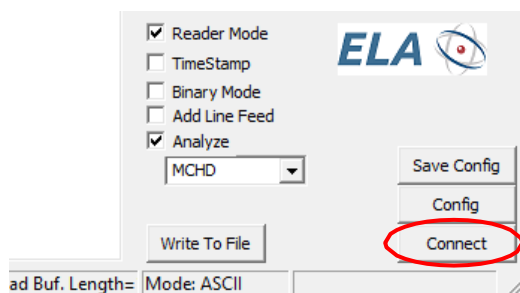
- Click on the **"CONFIG"** button.



- Depending of the type of SCIEL READER you use, you have option to **configure** either the **RS232 COM port or the IP port**.

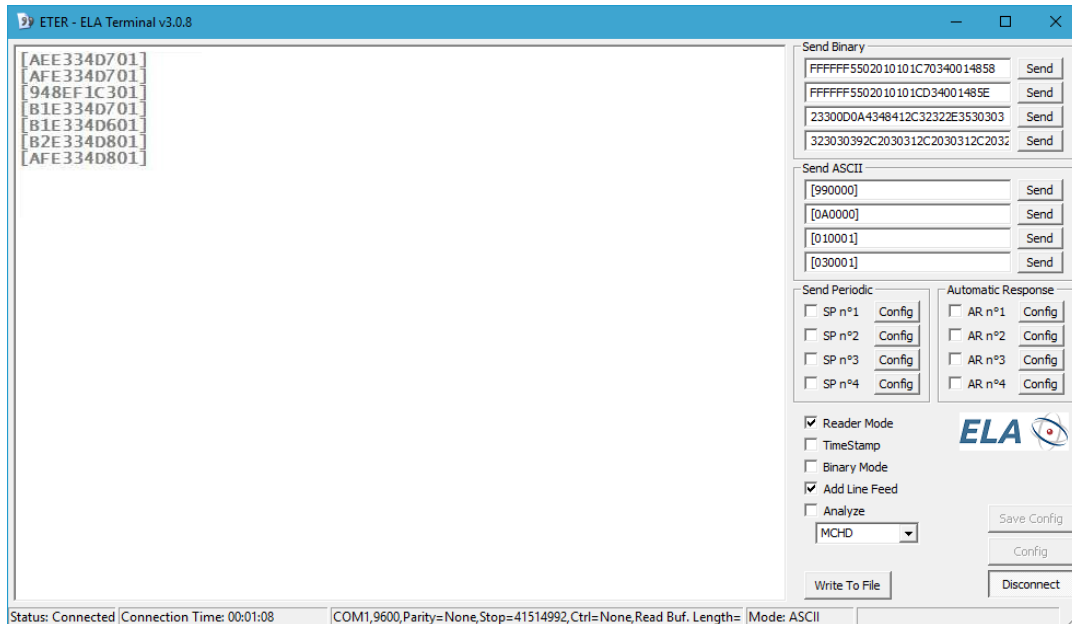


- Click on the **"CONNECT"** button to make effective the connection between your PC and the SCIEL READER device.



- All the ID's code received will be displayed in the real-time window.

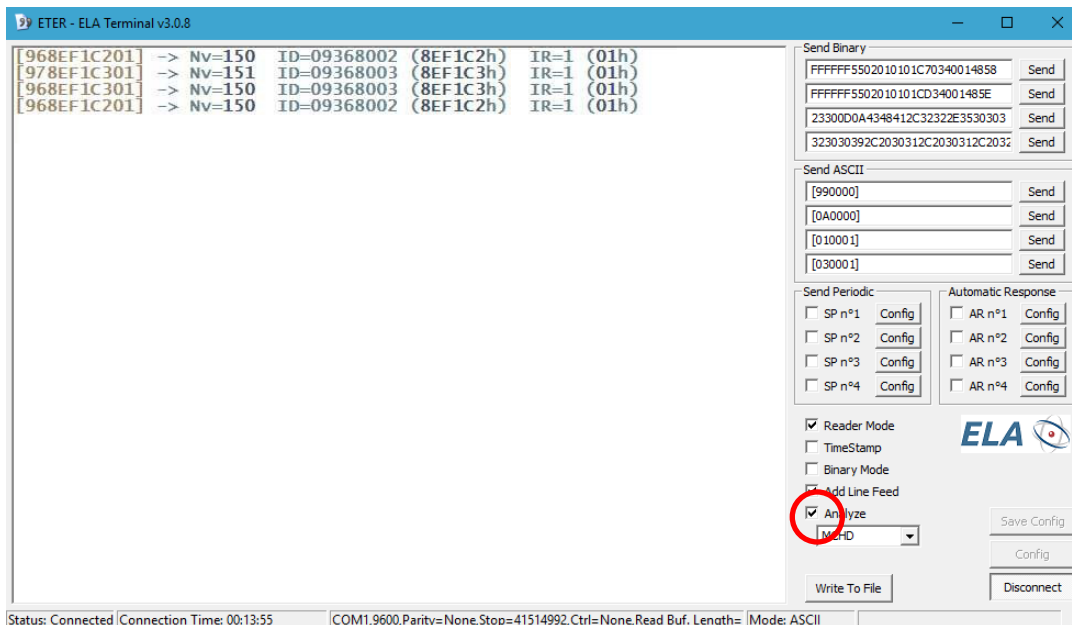
2 HOMEPAGE



Example for reception of ID's codes in the "ON LINE" mode




If you want to **see all the frame's details** in hexadecimal and decimal values, tick the checkbox "Analyze".

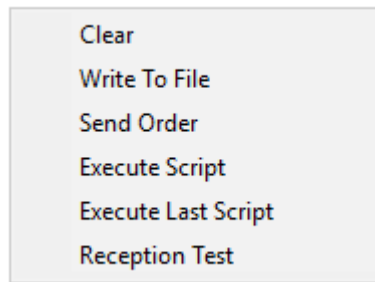


Example for reception of detailed ID's codes with decimal and hexadecimal values (checkbox « Analyze » checked)





Except in CUSTOM parameter, "Analyze" is non-functional in 32 bits.

 By right-clicking on the main window, a list of 6 choices appears



3 SENDING AN ORDER

Please refer to the MCHD Software specifications to know all the commands supported by our SCIEL READER devices. This list can be downloaded from our website www.rfid-ela.eu

-  Through the drop-down list, please select the choice “**Send Order**”.
-  Then either you fill directly the field “**Order**” with the selected programming order.

Send Order

Order: **01 01 01**

Redar Type:

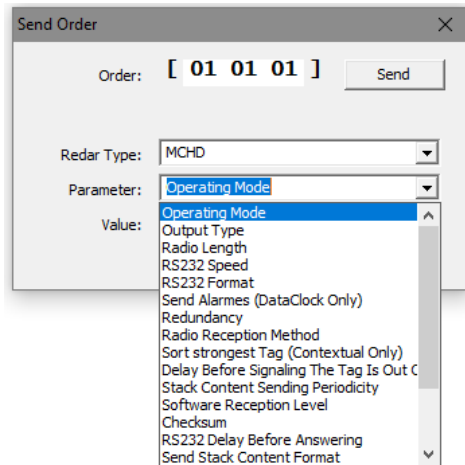
Parameter:

Value:

Read

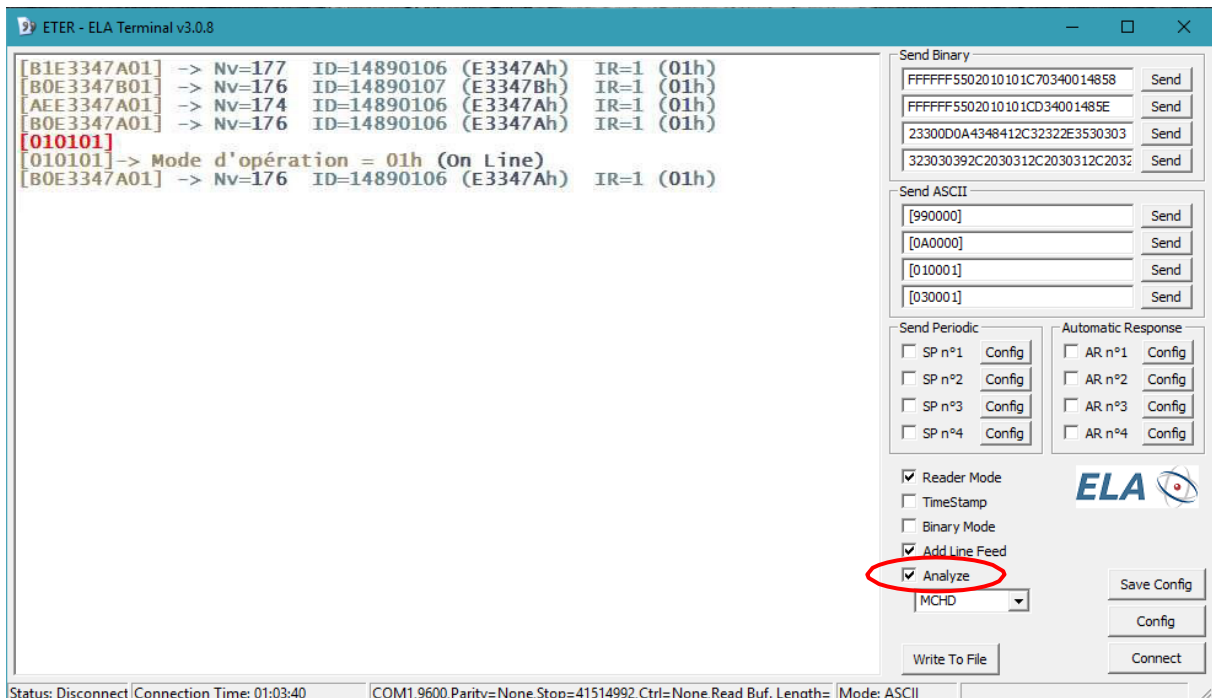
Or you can also select on the 3 drop-down lists:

- The type of reader: MCHD for all our SCIEL READER (SCIEL READER R, SCIEL READER WF, SCIEL READER IP, SCIEL CARD) and UTP for our UTP DIFF2 device.
- The type of commands: please refer to the MCHD Software Specifications.



- The Communication mode between the reader and the PC: ON LINE, CONTEXTUAL, PERIODIC CONTEXTUAL, or ON DEMAND CONTEXTUAL

Example: "Operating mode" command



- The answer is displayed with details: « On Line », since the check-box "Analyze" is activated.